

# WET LAND MAP FOR BLUE HERON RETREAT

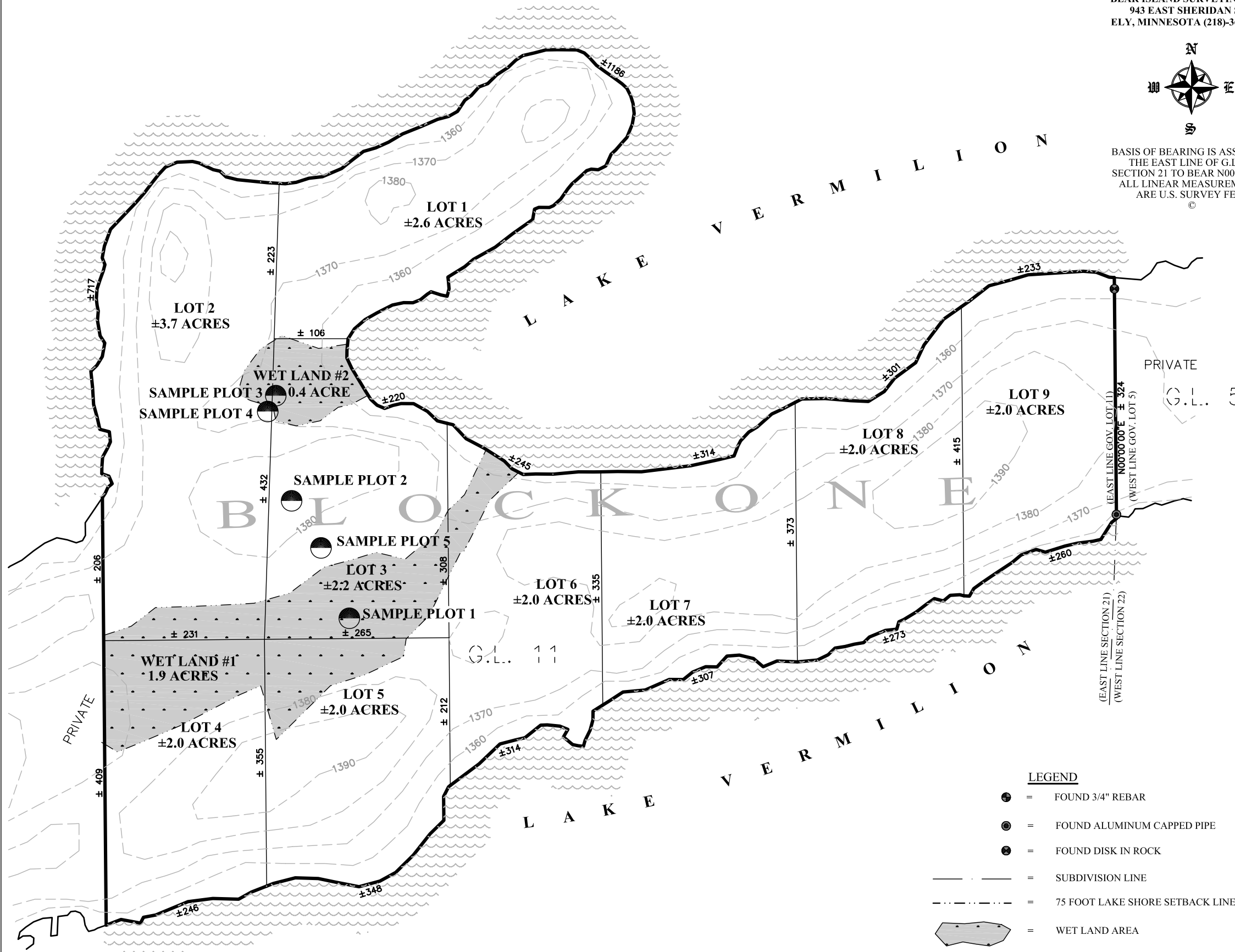
IN GOV. LOT 11, SECTION 21, T62N,  
R15W, 4th P.M.,  
ST. LOUIS COUNTY, MN  
SCALE 1"=100' MARCH, 2007

TOTAL ACREAGE = ±20.6 ACRES  
TOTAL LAKE SHORE = ±5926 FEET  
ZONING = RES-10  
LAKE VERMILION = GD

BEAR ISLAND SURVEYING INC.  
943 EAST SHERIDAN ST.  
ELY, MINNESOTA (218)-365-6893



BASIS OF BEARING IS ASSUMING  
THE EAST LINE OF G.L. 11,  
SECTION 21 TO BEAR N00°00'00"E  
ALL LINEAR MEASUREMENTS  
ARE U.S. SURVEY FEET  
©



### LEGEND

- = FOUND 3/4" REBAR
- = FOUND ALUMINUM CAPPED PIPE
- = FOUND DISK IN ROCK
- = SUBDIVISION LINE
- - - = 75 FOOT LAKE SHORE SETBACK LINE
- ▨ = WET LAND AREA

